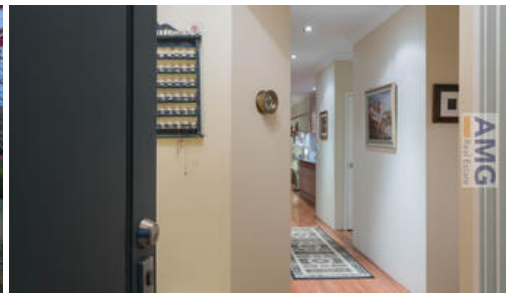




8 Sanguine Way, Atwell



Cool & Classy on Sanguine

HOME OPEN CANCELLED

Hidden behind a classic picket fence and bordered by a select mix of stunning native plants and fruit trees is this generously proportioned home that features spacious living areas, large bedrooms and a smart layout that make this wonderful home an absolute standout.

The wonderful design of this home allow the owners to make the most of the block and include a mix of open outdoor area and secure courtyard with a northern aspect.

All members of the family will have their own areas and space to move and make the most of this lovely property.

Featuring

- 4 large bedrooms plus Study or 5th bedroom
- 2 luxury bathrooms
- 2 living areas including a snug lounge or movie room

The above information provided has been furnished to us by the vendor/s. We have not verified whether or not that information is accurate and do not have any belief in one way or the other in its accuracy. We do not accept any responsibility to any person for its accuracy and do no more than pass it on. All interested parties should make and rely upon their own inquiries in order to determine whether or not this information is in fact accurate.

4 2 2

Price	SOLD
Property Type	residential
Property ID	1789
Land Area	500 m2

Agent Details

Angus Moffat - 0412 476 713
Harry Massam - 0459 775 775

Office Details

Bicton
Unit 3 115 Lefroy Rd Beaconsfield
WA 6162 Australia
08 9319 1255

