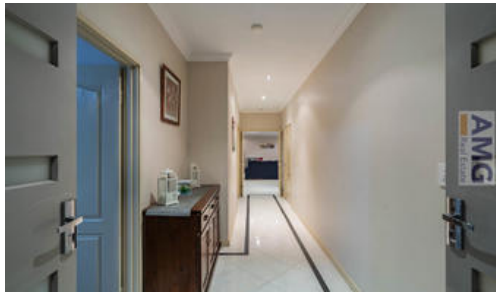


Sold



7 Abbotsdale Way, Southern River



Triple delight

Home Open Cancelled "Under Offer" Another wanted! This property has to be on your must view list. Take a look at this quality custom designed residence and feel immediately at Home! This LARGE 4 Bedroom , 2 Bathroom home is located within the beautiful Bletchley Park Estate. Master Bedroom has his and hers robes, spa bath double vanity separate toilet. 3 Minor bedrooms have double built in robes The modern chefs kitchen with abundance of bench and cupboards, dishwasher, open to the Family and Meals rooms, which has gas bayonet With a large separate Theatre Room, the family can spread themselves out and relax...and with the TRIPLE car garage, and the kids can stop blocking the driveway! Easy to care for reticulated Gardens, and for the security conscious - this home also features an alarm.

4 good sized bedrooms

2 bathrooms

Massive kitchen with dishwasher and heaps of bench space. Shoppers entry

Spacious living and dining area

🛏️ 4 🚿 2 🚗 3

Price SOLD
Property Type residential
Property ID 1858
Land Area 503 m2

Agent Details
 Angus Moffat - 0412 476 713
 Harry Massam - 0459 775 775

Office Details
 Bicton
 Unit 3 115 Lefroy Rd Beaconsfield
 WA 6162 Australia
 08 9319 1255



The above information provided has been furnished to us by the vendor/s. We have not verified whether or not that information is accurate and do not have any belief in one way or the other in its accuracy. We do not accept any responsibility to any person for its accuracy and do no more than pass it on. All interested parties should make and rely upon their own inquiries in order to determine whether or not this information is in fact accurate.